

Your Guide to the SunBox® SunRay™

You have just made the important decision to purchase your own SunRay™ light box. With this purchase, you join thousands of other individuals and hundreds of facilities worldwide who have chosen to use SunBox® products. Thank you for choosing The SunBox Company as your bright light source. We truly value your business.

SunBoxes are the most advanced and the highest quality bright light boxes on the market and are backed by a lifetime warranty—the longest in the industry. Founded in 1985, The SunBox® Company is the original manufacturer of high-intensity light boxes. We constantly strive for excellence and are proud of our products and service.

About the size of a briefcase and weighing only 14 lbs., it provides 10,000 lux at a distance of 18.5". Your SunRay™ has a padded handle and includes a titled desk stand which tucks neatly behind the unit. These features combine to make it an extremely portable unit. You can easily move your SunRay™ from room to room or from home to office.

Unlike other units on the market, your SunRay™ will remain cool to the touch. In addition, your SunRay™ contains full spectrum bulbs (with the UV filtered out). Many people find the "daylight replication" of full spectrum fluorescent tubes preferable to other types of artificial light, contributing less to headaches and eyestrain.

IMPORTANT NOTES:

- In the event that your unit is damaged or broken upon delivery, immediately report the problem to us by calling 800-548-3968 (toll-free) or 301-869-5980 so that the problem can be resolved in a timely fashion. This should be done within 5 days after you receive the unit.
- Occasionally, fluorescent lamps may break or become loose in shipping. If, upon receipt, the fixture does not light, see the instructions for replacing the bulb to open the unit and confirm if the bulb is intact. If your bulb is broken please contact us so we can send you a replacement.
- Please save all packing materials for reuse, should you need to return your unit to us. The SunBox® Company cannot be responsible for damage due to insufficient packing.
- To prevent electric shock, do not use this light in any extension cord or other outlet unless all three prongs of the plug can be inserted fully. Never remove the third (grounding) prong of this unit's plug. If you need to convert our 3-prong plug for a 2-prong outlet, make sure you properly ground the adapter to the wall plate. Otherwise, the light fixture might flicker while either on or off.

General Guidelines for Use

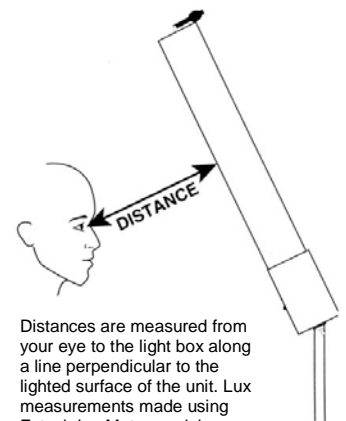
Most people use their SunBox® light boxes as sources of bright light during the fall and winter months. Some people use them on overcast days at any time of year, or when their schedules or surroundings do not allow much exposure to natural sunlight. People working night shifts also use SunBoxes. Most people use light in the morning. If you use light too late in the day, it may disturb sleep.

To use a SunBox as a bright light source, the light should be in front of you, angled so that the light shines onto your face, and your eyes should be open. It is not necessary to look directly into the light; most people read, eat, work on computers or watch TV while using their SunBox. Eyeglasses or contact lenses may be worn, but heavily tinted glasses will reduce the amount of light received.

To receive:

10,000 lux your eyes must be at a distance of:	18.5"
5,000 lux	29"
2,500lux	42"

Average use at the 10,000 lux distance is roughly 15-30 minutes per day. At 5,000 lux, that would be the equivalent of 40 minutes to 1 hour. At 2,500 lux, the light might be used for two to three hours. Actual time for a particular individual will vary. It usually takes some experimentation to find a routine that is right for you.



Distances are measured from your eye to the light box along a line perpendicular to the lighted surface of the unit. Lux measurements made using Extech LuxMeter model 407026.

The SunBox® Company • 201 Broadway St, Suite B • Frederick, MD 21701
Toll-free Phone: 800-548-3968 • Local Phone 301-869-5980 • Fax: 301-977-2281
Email: orders@sunbox.com • Website: www.sunbox.com

SunRay™ Desk Stand Installation

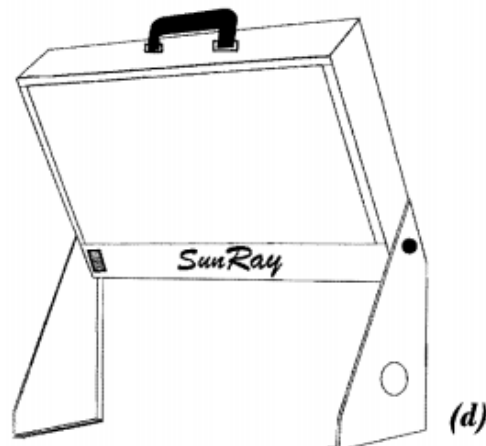
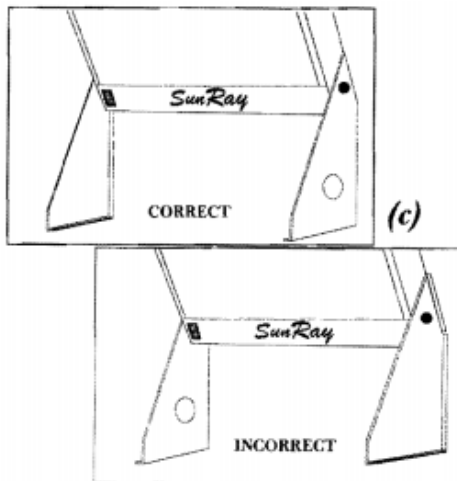
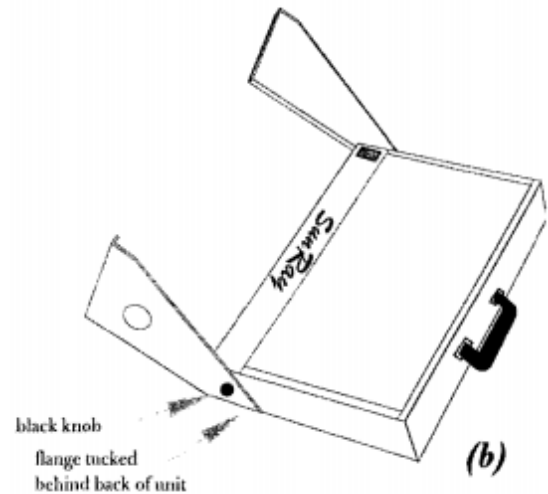
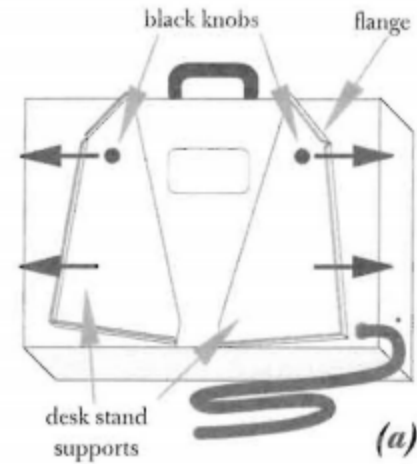
1. Place your SunRay on a flat surface. It may be advisable to assemble the stand on a carpeted floor or a mar-resistant surface to avoid scratching furniture.

2. When your SunRay was shipped to you, the desk stand supports were attached to the back of the unit. Each support is held in place by one black plastic knob and a bit of Velcro. Unscrew the black knob; twist counterclockwise. Pull the desk stand supports from the back of the unit (a)

3. Lay your SunRay on its back.

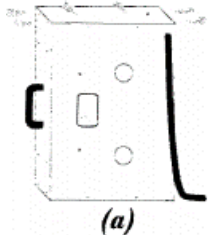
4. Attach the desk stand support pieces to the sides of the light unit using the black knob you removed in step 2 (b). There is a hole for the knob's screw near the bottom of each side panel. Be sure the flange on each side is tucked behind the back of the light unit (c). Each desk stand support is designed for a particular side of the unit. If the flanges won't tuck behind the back of the unit, you have the desk stand supports attached to the wrong side of the unit. There is no need to use tools, but make sure the knobs are screwed in tightly.

5. Stand your SunRay upright on its desk stand (d). Plug it in and it is ready to use.



SunRay® / SunRay II+ Bulb Replacement

Make sure your SunRay is not plugged into a wall outlet. If your SunRay is set on its desk stand, remove the stand supports from the light box. Stand the unit on its side so that the on/off switch and the power cord are near the top.



1. Using a #1 Phillips head screwdriver, remove the six screws (a) along the top edge that holds the side panel in place. If a #1 Phillips head screwdriver doesn't seem to fit, you're trying to remove the set of screws at the wrong end of the box. In this case, flip the unit over, then unscrew.

2. Remove the end piece and slide the diffuser out (b).

3. Lay your SunRay on its back (c).

4. Remove the screw and washer from the bulb clamp of the bulb you are replacing (d). It is best to replace one bulb at a time.

5. Press down on the red socket locks (e) at the other end of the bulb. The socket locks will rotate, freeing the pins at the end of the bulb.

6. Lift the old bulb straight up while pressing down on the socket locks. If the old bulb is broken be very careful not to cut yourself. Also, be sure to remove any broken glass from the interior of the SunRay. Carefully discard both the old bulb and old bulb clamp.

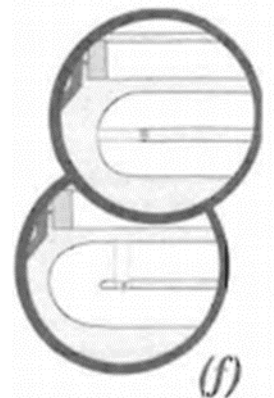
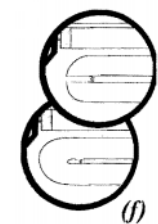
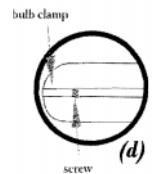
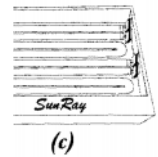
7. Place the new bulb clamp around the bend of the replacement bulb.

8. Put the new bulb in place. The red socket locks should still be in the unlocked position. With the flat side of the bulb clamp down, align the four pins at the end of the bulb with the four slots at the top of the socket. Push the bulb down to lock the pins in place. The downward pressure will cause the socket locks to swing up into the locked position.

9. Screw the bulb clamp into place using the screw and washer you removed in step 4. Depending on the length of the bulb (bulb length may vary up to ¼'), you may either place the clamp at the end of the bulb or on the side (f). As long as the bulb clamp is screwed down securely, the bulb clamp placement (side or end) does not affect the SunRay's function. If you place the bulb clamp at the end of the bulb (instead of the side), make sure the pins are still making a secure contact with the socket after you have tightened the bulb clamp down. If they are not, you must move the bulb clamp to the side of the bulb.

10. Slide the diffuser back into place, with the rough textured surface facing out. Then reinsert the end piece and screw it into place using the six screws you removed in step 2. You may wish to stand your SunRay on its end for this step.

11. Plug the light box in and turn it on to test the new bulb. If the new bulb does not light and you placed the bulb clamp on the end of the bulb, remove the bulb and replace it, putting the bulb clamp on the side of the bulb.



Note: Your light box has a built-in safety mechanism, designed to reduce your risk of electrical shock. This safety mechanism requires that you perform step 10 before the bulbs will light.

Optional SunRay Accessories



Universal Floor Stand:

Eliminates the needs for desk space. This adjustable stand can accommodate your height in any chair. Includes casters.

SunRay/ SunRay II+ Carrying Case:

This black carrying case is made of durable nylon with adjustable shoulder strap. Two zipper designs allows access to the SunRay handle. Padded to protect your light box.



REMINDER TO REPLACE YOUR BULBS

Because bulbs lose intensity with use, and continued use of old fluorescent bulbs can damage the ballast, we recommend that you change your bulb frequently. Do not wait until your bulbs burn out to replace them! Most people should replace their bulbs every two to three (2-3) years. With your SunRay™ purchase, you are entitled to a 20% discount on future purchases of the FBO31/750 replacement bulbs.

You can place an order online 24 hours a day from our website- www.sunbox.com (discount will already be applied) or simply just give us a call toll free at (800) 548-3968 or (301) 869-5980. We will return your call within 24 hours.

If, for any reason, you encounter problems with your SunRay™, contact us at 800-548-3968 or 301-869-5980.

Limited Warranty/Guarantee: The SunBox® Company, Inc. (us, we, our) warrants to the original purchaser (you, your) that the SunRay™ (light unit, unit) is to be free from defects in material and workmanship under normal use and service for the life of the product. Our entire liability and your exclusive remedy as to the unit(s) shall be repair or replacement of the unit, at our option, when returned to us with a copy of the receipt. You shall be responsible for the cost of returning the unit to us with a copy of the receipt and we will return the unit to you at our cost. If failure of the unit has resulted from accident, abuse, or misapplication, we shall have no responsibility to replace or repair the unit. Any replacement unit will be warranted for the remainder of the original warranty period. Fluorescent bulbs are guaranteed for two years against failure. Fluorescent bulbs must be replaced every 3 years for this warranty to remain valid.

The above are the only warranties of any kind, either express or implied, including but not limited to the implied warranties of merchantability and fitness for a particular purpose, that are made by The SunBox® Company on this product. No oral or written information or advice given by The SunBox® Company, its dealers, distributors, agents, or employees shall create a warranty or in any way increase the scope of this warranty. This warranty gives you specific legal rights. You may have other rights, which vary from state to state.

Specifications: 110V AC 50/60Hz 124 watts 1.15 amps
Dimensions: 23" W x 15.5" H x 3.25" D Weight: 14 lbs.
Replace bulbs with Sylvania #FBO31/750 (5000°K).
Also available in World Voltage (100-240, 50-60Hz) model.

